



CHAPTER THIRTEEN

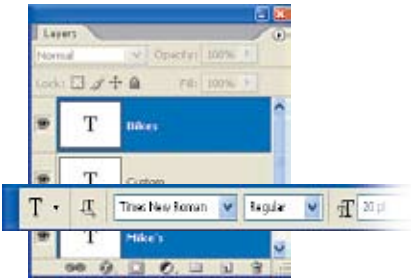
TYPE

Look in this chapter to find answers to questions on:

- **Creating & Editing**
- **Committing Type**
- **Display Issues**
- **Filters**
- **Font Issues**
- **Moving**
- **Paragraph Type**
- **Platforms/Versions**
- **Rasterizing**
- **Transforming**
- **Type Mask**

CREATING & EDITING

Q *Is it possible to change the attributes of several Type layers at once? I have several separate Type layers but would like to change the font of all of them at once. Can I do this?*



A Just press Command (PC: Control) and click on the Type layers' names in the Layers palette to select them. Then, change the attributes in the Character or Paragraph palettes (both found under the Window menu) or within the Options Bar.

Q *I need to change the color of my type, but it's hard to see because it is highlighted.*

A To change the text color, you probably highlighted the text and changed the color. The problem is that you can't see the new color, so press Command-H (PC: Control-H) to temporarily hide the highlight, and then change your color in the Options Bar.

Q *Is there a quick way to color my text? To change the color of my text, do I have to use the Options Bar, or is there a quicker way?*

A You can change the color of a Type layer without highlighting it. Just make sure your Type layer is the active layer, then choose your color by clicking on the Foreground color swatch and pressing Option-Delete (PC: Alt-Backspace). (Again, you don't have to have the type highlighted, just make sure the layer is active.)

Q *Is it possible to change the font and size without selecting the text? I want to change the font or size of some existing type. Do I have to switch to the Type tool, highlight the text, and then change the settings?*

A First make sure the Type layer is the active layer. Then, as long as you can see the Character palette, you can change any setting in the dialog. (The same goes for the Paragraph palette, and they're both under the Window menu.) The only time you need to use the Type tool (T) is to edit the actual content (spelling, etc.).

Q *Is there a quick way to change the space between two letters? I'd like to adjust the spacing between two characters in a word. How do I do that?*

A With the Type tool (T) selected, click your cursor between two characters in your text. Then hold down Option (PC: Alt) and press the Left Arrow key to decrease the space or the Right Arrow key to increase the space. (This function is called "kerning.")

Q *What are leading, tracking, and kerning?*

A Kerning refers to altering the space between two letters. Leading refers to the space between lines of type. Tracking refers to the space between all characters in the type.

Q *Is it possible to create type in inches instead of points? For my project it would be easier to create my type size in inches rather than points. Can I do that?*



A Yes, when you enter a size (in the Options Bar or the Character palette), just type "in" after the size. This will size the type in inches. *Note:* As soon as you press Return (PC: Enter), the measurement will revert to the equivalent in points of the size you entered in inches, saving you the math.

continued

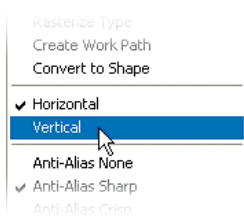
Q *Is there a quick way to increase the font size of my type? I want to be able to quickly increase or decrease the font size to see how it looks. Is there a quick way to do this?*

A Select your text with the Type tool (T), and then click in the Font Size field in the Options Bar. Use the Up or Down Arrow keys to change the size by 1 point, or use Shift and the Arrow keys to change the size by 10-point increments. Or if you prefer keyboard shortcuts, press Command-Shift- (Period key) (PC: Control-Shift-.) to make the text larger or Command-Shift-, (Comma key) (PC: Control-Shift-,) to make it smaller.

Q *Is there a quick way to highlight my type? I was using another tool and wanted to highlight and edit my type. Is there an easier way than choosing the Type tool and then highlighting the text on my image?*

A Yes, with any tool, double-click on the “T” symbol in the thumbnail to the left of the layer name. Photoshop will automatically switch to the Type tool and highlight your type. *Note:* This works particularly well when you have a number of Type layers and you want to make sure you are highlighting the correct text.

Q *Is it possible to change type from horizontal to vertical?*



A Yes, Control-click (PC: Right-click) on the type with the Type tool (T) and choose the appropriate orientation from the contextual menu. Or, make your Type layer the target layer and from the Layer menu choose Type>Vertical.

Q *I entered a bunch of type with the Caps Lock key on by mistake. Is there a simple way to change it to lowercase?*

A Sure, there’s a couple of options: Highlight the text with the Type tool (T) and open the Character palette (you can press Command-T [PC: Control-T] to open the palette, as long as you’ve already highlighted the text). From the Character palette’s flyout menu, deselect All Caps. Or, if you like keyboard shortcuts, highlight the text and press Command-Shift-K (PC: Control-Shift-K). This shortcut works as a “toggle switch”—it turns All Caps into lowercase or lowercase into All Caps. (Make sure you have the text highlighted first, as the same shortcut is used for Color Settings.)

Q *This has never happened before, but now when I enter some type I can only see the first line of type—the rest is missing in action. Why is that?*

A There are two factors that are causing this to happen. First, Photoshop remembers the last settings you have used—sometimes well past the point of being helpful. In this case Photoshop is “helping” by remembering the leading (space between lines) that you previously used—even after you changed the font size. Also, unlike some programs, if you change the font size, the leading does not automatically change. For example, say you have used a size of 300 points and leading of 315 points. If you change the font size to 40, Photoshop still remembers the leading of 315, and because it doesn’t automatically change, it will stay as is. So, your second line of type is there, it’s just really far down in the document! To fix this, use the Paragraph palette (Windows>Paragraph) to lower the leading to a more reasonable amount. From then on, just remember to check the leading (and tracking and kerning and horizontal scaling...) each time you change the size of your type.



Q *How do I create an outline of text, in other words, no fill, just a stroke? But here's the catch, I want to be able to edit the type...*

A There are a couple of options: add a new layer with a stroke or use the Stroke layer style. They each have their advantages, so we'll look at both. Here's how to add a separate layer with a stroke: Click on the Create a New Layer icon in the Layers palette to add a new layer above the Type layer. Then hold down Command (PC: Control) and click on the Type layer's thumbnail to create a selection. From the Edit menu, choose Stroke. Set the Width and Color of the stroke and click OK. To "remove" the fill in the type, click on the Type layer and change the Opacity in the Layers palette from 100% to 0%. Because the stroke is on a separate layer, you can add effects to it, such as a beveled edge. On the other hand, if you decide to edit the text, you have to delete the stroke layer and start over.

Alternately, you can use a layer style. With the Type layer selected, choose Stroke in the Add a Layer Style pop-up menu at the bottom of the Layers palette. Select the Size and Color of the stroke and click OK. You will see the original filled text with a stroke around it. As before, click on the Type layer and lower the Opacity to 0%. The biggest advantage of this method is that the stroke is a "live" effect, so when you edit the type, the stroke changes automatically. (Another advantage of using the layer style is the option to stroke with not only a solid color, but also a pattern or a gradient.)

COMMITTING TYPE

Q *Is there a quick way to finish with the Type tool other than clicking the Commit button? When I've finished typing, I need to click the Commit button in the Options Bar to finish with the Type tool. Is there a quicker way?*

A Press the Enter key on your numeric keypad or click on another tool in the Toolbox.

Q *How do I commit my type on a laptop? In order to tell the Type tool I'm finished, I have to commit it by clicking the Commit button. I read that you can also use the Enter key, but my laptop doesn't have a keypad. Am I out of luck?*

A No, you can use another shortcut, made for anyone lacking an Enter keypad key. Just press Command-Return (PC: Control-Enter) instead.

Q *I'm trying to use Command-Return (PC: Control-Enter) to commit my type, but it's not working. Why?*

A Check to see if your cursor is still flashing in one of the text fields (Size, for example) in the Options Bar or any open palette. If it is, you'll need to press Return (PC: Enter) to finalize the choice in that field, then press Command-Return (PC: Control-Enter) to commit the type.

DISPLAY ISSUES

Q *Is it possible to avoid jagged text when importing? Is there way to import text from other programs into Photoshop without getting jagged edges?*

A When you import text from elsewhere using the File>Place command, it has to be converted into pixels—there's no way around that. That means that imported type is not really type at all—it is a pixel layer that will likely appear

continued

more jagged than type added directly in Photoshop. Instead, copy the text from the other application, click once with the Type tool (T), and paste (Edit>Paste) your copied text.

Q *Why does my text look jagged? When I save as a JPEG, my text looks more jagged than in Photoshop format (PSD). Why?*

A When you save in formats like TIFF or JPEG, the Type layers are converted to pixels. To help avoid jagged edges in your text, be sure None is not selected in the Anti-aliasing pop-up menu in the Options Bar (when you have the Type tool [T] active).

Q *Why doesn't my text look like vector type? I thought type was now vector in Photoshop, but it sure doesn't look like it when I put my TIFF file into my page-layout software. What gives?*

A While you're working in Photoshop, the type is vector. As soon as you save in a raster format, such as BMP, JPEG, or TIFF, the type becomes rasterized and the quality "suffers." The only way to preserve the vector quality is to save in PSD or PDF format.

FILTERS

Q *How do I fill type with a texture? I have a Type layer and I'd like it to look textured. Can I add a texture without losing the option of editing my text?*

A One option is to add a layer style—Pattern Overlay. From the Layer menu, select Layer Style>Pattern Overlay. You can use existing patterns or create your own. This method works well because it is a layer style that can easily be changed. Another option is to click on the Create a New Layer icon to add a new

layer above the Type layer and fill it with whatever texture you want (try going to the Swatches or Styles palettes in the Window menu). Then use Layer>Create Clipping Mask to create a layer clipping mask that will make the texture visible only in the letters.

This method has several advantages: You can still edit the type, the texture can be moved around in the letters, and the texture is not restricted to being a repeating pattern (you can add some filters, etc.).

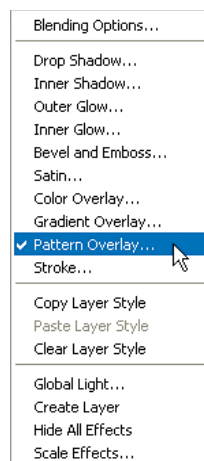
Q *Why can't I blur my Type layer?*

A You cannot have any kind of filter or paint applied to a Type layer while it's a Type layer. To give yourself increased flexibility, duplicate the Type layer (Command-J [PC: Control-J]). Then, in the Layer menu select Rasterize>Type. Now that the layer has been rasterized (turned into pixels), you should be able to run your blur filter. (You do not have to duplicate the Type layer first, but once a Type layer is rasterized, there's no going back to edit the type.) *Note:* If you still can't blur the text, check to see if Lock Transparent Pixels is selected in the Layers palette.

Q *Why can't I paint on (apply a filter to) my type?*

A By nature, Type layers are locked so that you cannot use painting tools or filters. To get around this you must:

1. Rasterize the Type layer (or better still, make a copy and then rasterize it [see previous question]).



2. Click on the Create a New Layer icon to add a separate layer immediately above the Type layer on which you paint (filter) and then go to Layer>Create Clipping Mask. By painting in the mask, it will create the appearance of the type being painted, but offers the advantage of keeping an editable Type layer.

FONT ISSUES

Q How do I get a trademark or copyright symbol?

A The answer lies in your operating system, because these text functions are not controlled by Photoshop. Depending on your platform, you either press keyboard combinations or go to a “font map” that will help you create the character. The bottom line is that the process is the same for any application.

Mac:

Copyright (©): Option-G
 Trademark (™): Option-2

PC:

Copyright (©): Alt-0169
 (using the numeric keypad)
 Trademark (™): Alt-0153
 (using the numeric keypad)

Q How do I get fonts to show in Photoshop? I want to have Chinese fonts in my artwork. How do I get these fonts to work in Photoshop?

A Fonts are an operating system issue. If the fonts are installed on your computer, they should show up in all your software.

Q What is Faux Bold (Faux Italic)?

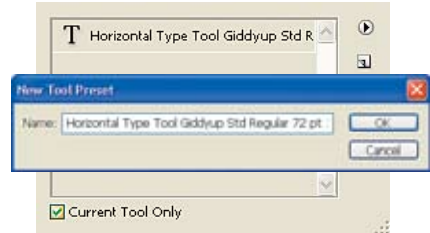
A Faux Bold is an option that lets you add “pretend bold” to a font that does not have a bold version. It is found in the Character palette’s

flyout menu. *Note:* Some functions, such as Text Warp and embedding fonts in PDF files, do not work if Faux Bold (or Italic) is used.

Q Is there a quick way to scroll through fonts? I’ve highlighted my type and want to experiment with different fonts.

A As long as your text is highlighted with the Type tool (T), go to the Options Bar, highlight the font name in the Font field, and use the Up or Down Arrow keys on your keyboard to scroll through the fonts. *Note:* You do not have to highlight the text with the Type tool for this to work—you can also use the Character palette (Window>Character).

Q Is it possible to change my default font? Whenever I click with my Type tool, I get whatever font and size I previously used. Can I change to a standard choice or default?

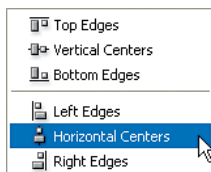


A You can create the equivalent of a default with a tool preset. Change to the font and size you want, and then from the Tool Presets palette (which you open by clicking on the tool thumbnail on the left side of the Options Bar), click on the Create New Tool Preset icon. When using the Type tool (T), you can turn on the Current Tool Only checkbox to see your tool presets for the Type tool only. Choose the appropriate “default” and away you go!

continued

MOVING

Q How do I center type on an image?



A Command-click (PC: Control-click) to select the Background layer and your Type layer. From the Layer menu choose Align and pick the alignment you want (or choose the Move tool [V] and use the Align icons in the Options Bar). You can also use Smart Guides (View>Show>Smart Guides) to center your text. As you move your Type layer, a smart guide will appear when the type is centered.

Q How can I move type while I'm typing? Is it possible to reposition my type without committing it first?

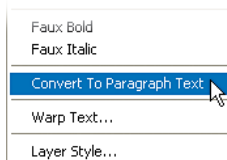
A All you have to do is drag the cursor about an inch away from the type and your cursor will temporarily change into the Move tool.

Q Why can't I use the Move tool with vertical type? When I use my Type tool, I can move my mouse away from the type to temporarily get the Move tool to position the type. I can't seem to get this to work with vertical type. Am I missing something?

A It should work, but if it doesn't, you can also try holding down Command (PC: Control) to temporarily activate the Move tool while using the Type tool.

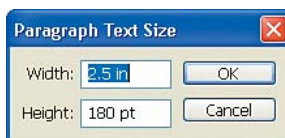
PARAGRAPH TYPE

Q Is it possible to convert from regular text to paragraph text? I've created regular text but now would like it to be in a paragraph box. Do I have to start over, or can I convert the text?



A With the Type tool (T), Control-click (PC: Right-click) and choose Convert to Paragraph Text in the contextual menu. Or go to the Layer menu and choose Type>Convert to Paragraph Text.

Q Is it possible to create a paragraph text box in a specific size? When I click-and-drag with my Type tool to create a paragraph text box, I'd like to make it a specific size. Can I?



A The manual method would be to watch the Info palette as you drag with the Type tool (T). Another method would be to hold down Option (PC: Alt) and click on the image where you want the top-left corner of your paragraph box. A dialog will appear in which you can enter the specific dimensions. Note: It may default to points, but you can use any unit of measurement simply by typing—for example, "2.5 in" to use inches rather than points.



Q *How do I convert paragraph type to regular (point) type?*

A From the Layer menu, select Type>Convert to Point Text, or with the Type tool (T) active Control-click (PC: Right-click) on the Type layer's name and choose Convert to Point Text in the contextual menu.

PLATFORMS/VERSIONS

Q *Is it possible to give a layered document to someone if they don't have my fonts?*

A Yes. The type will still show up, but they will not be able to edit it. If they attempt to edit the type, Photoshop will tell them that the font is not installed and must be replaced. To avoid this, rasterize the type (Layer>Rasterize>Type) before sending the file (but keep a copy with the original Type layers for yourself).

Q *What is the best way to deal with type from older versions of Photoshop? When I open a document that I created in an earlier version, I get a message about updating Type layers. Should I update or not?*

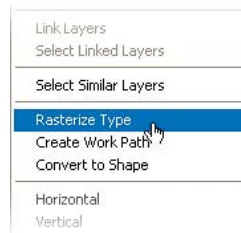
A That depends on whether you want to edit the Type layers or not. If you don't click the Update button in the warning dialog, you will see your Type layer when the document opens; but before you are able to edit it, you'll have to update the text anyway. Don't worry about updating the layer(s) as you open the document, because as soon as you double-click on the Type layer to edit it, Photoshop will do the updating for you. *Note:* When you update the type, the look of the type might change slightly.

RASTERIZING

Q *What is rasterizing?*

A Rasterizing really means "to turn into pixels." Type layers and Shape layers both use vectors to describe their contents, meaning you get high quality and scalability. Raster layers are those containing pixels (which are not as scalable). Rasterizing is the process of converting vectors to raster layers made of pixels.

Q *When should I rasterize a Type layer?*



A Many functions can be completed without rasterizing type, such as color, layer effects, clipping masks, and some transformations. If you can complete the operation without rasterizing, do it! If the "cancel" symbol appears as your cursor, that tells you the operation cannot be done to a Type layer—you must rasterize the layer. I suggest that you duplicate the Type layer (Command-J [PC: Control-J]) and then rasterize the copy. That way, you still have a Type layer you can edit should you need to. To rasterize a Type layer, go to the Layer menu and choose Rasterize>Type. Or Control-click (PC: Right-click) on the layer's name in the Layers palette and choose Rasterize Type from the contextual menu.

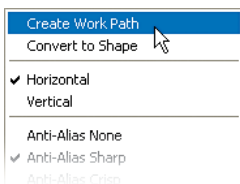
continued

Q *Is there a quick way to rasterize type?*

A Sure, instead of going to the Layer menu, you can also Control-click (PC: Right-click) on the layer's name and choose Rasterize Type from the contextual menu.

TRANSFORMING

Q *Is it possible to change the shape of letters? Is there a way to alter the actual shape of letters like you can in vector software?*



A Yes, by converting the type to a path or a shape. From the Layer menu choose Type>Create Work Path or Convert to Shape. Then you can use the Pen tool (P) to add/delete anchor points and the Direct Selection tool to reshape the paths. *Note:* You cannot use this command if your typeface uses Faux Bold or Faux Italic.

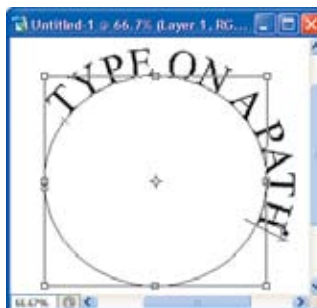
Q *Is it possible to distort my type but still keep it editable? I want to use transformations on a Type layer but would still like to edit my text. Is that possible?*

A It depends on the transformation you want to use. Many transformations—Scale, Rotate, Skew, and Flip found under Edit>Transform—can be applied to Type layers without losing the ability to edit the type. Other transformations such as Distort and Perspective will not work unless you first rasterize the Type layer (Layer>Type>Rasterize).

Q *Is it possible to convert a Type layer into paths?*

A Yes. From the Layer menu choose Type>Create Work Path. Then you can use the Pen tool (P) to add/delete anchor points and the Direct Selection tool to reshape the paths. *Note:* You cannot use this command if your typeface uses Faux Bold or Faux Italic.

Q *How can I put text on a curve? I can't figure out how to take a straight line of text and curve it so that it makes a perfect circle.*



A First, use the Ellipse tool (Shift-U) to draw a circular path (be sure the Paths icon is selected in the tool's Options Bar). Then select your type with the Type tool (T), cut it (Edit>Cut), click on the circular path with the Type tool, and paste (Edit>Paste). To reposition the type along the path, hold down Command (PC: Control) and drag the cursor along the path.

Q *How do I hide part of a Type layer? I want to hide part of a Type layer to make it look like the type is behind part of an image. How do I do that without losing the ability to edit the text?*

A First, click on the Add Layer Mask icon at the bottom of the Layers palette to add a layer mask to the Type layer. Then, with black as your Foreground color, paint (on the mask) using the Brush tool (B) over the portions of the Type layer that you want to hide.



Q *Why can't I add a perspective distort to my type? I am trying to use the Edit>Transform commands on a Type layer and most of them are available, but not Distort or Perspective. Is it possible to do a perspective distort to type?*

A Not really—at least it's not possible to use Distort or Perspective and still keep editable type. You'll have to do one of the following:

1. Rasterize the Type layer (Layer>Rasterize>Type) before applying Distort or Perspective (or even better, make a copy of the Type layer and then rasterize the copy).
2. Change the Type layer to a Shape layer. From the Layer menu, choose Type>Convert to Shape. Now you can use Distort or Perspective and have the added advantage of using a vector shape to describe the type. It's still not editable, but at least it will have higher quality edges.

TYPE MASK

Q *What is the Type Mask tool?*

A This tool lets you create a selection based on text. When you are finished typing, you will have a selection rather than a Type layer. *Note:* A new layer is not automatically created with this tool.

Q *Is it possible to edit the font and size after you've used the Type Mask tool?*

A No, you cannot edit the font, because the Type Mask tool creates a selection. As an alternate plan, you could create a regular Type layer using the regular Type tool (T), and then Command-click (PC: Control-click) on the Type layer's thumbnail to load it as a selection. That way, you can edit the Type layer and then create a new selection based on that edited text.

Q *Why doesn't the Type Mask tool create a new layer? When I used the Type Mask tool, I assumed it would make a new layer like the Type tool, but it doesn't. Why not?*

A Frankly, I can't tell you why, but I can confirm that, yes, you need to click on the Create a New Layer icon at the bottom of the Layers palette first if you want that type-based selection to be on its own layer.