

TOP 100

#71 Create a Contact Sheet of Your Images 158

#72 Design a Picture Package 160

#73 Customize Your Picture Package Layout 162

#74 Resample Your Image 164

#75 Scale Your Images for Print and the Web. 166

#76 Create an Online Photo Gallery 168

#77 Optimize Images for Print or the Web 170

#78 Put File Info into Your Images 172

#79 Work with the File Browser. 174

#80 Rank Files with the File Browser. . . . 176



CHAPTER 8

Preparing Images for Print and the Web

When you are finished with a file, you may want to either print the file or use it on the Web. Photoshop includes many features that make printing photographs or any image a snap. It also provides tools for creating attractive images that you can upload straight to the Web.

Photoshop offers automated tools that create *contact sheets* and *picture packages*. Contact sheets are composed of thumbnails of your images that you can use to preview and record your images. You print these images at a slightly lower resolution because they are only for your reference. A picture package contains one or several different images in a variety of sizes that you can print on one page. You should

always take advantage of the Print Preview feature in Photoshop, to spot errors or other problems before the photo goes to print.

You can use the Save for Web dialog box to create images in GIF, JPEG, and PNG formats, the three standard formats for displaying images on the Web. Photoshop can also build an online photo gallery. You can have Photoshop automatically generate the thumbnails and layouts for you, and all you need to do is upload the Web pages and images.

The File Browser is a great tool for working with your print images or your Web graphics. You can easily browse, rank, and add information to your images.

TOP 100

#71 Create a Contact Sheet of Your Images 158

#72 Design a Picture Package 160

#73 Customize Your Picture Package Layout 162

#74 Resample Your Image 164

#75 Scale Your Images for Print and the Web. 166

#76 Create an Online Photo Gallery 168

#77 Optimize Images for Print or the Web 170

#78 Put File Info into Your Images 172

#79 Work with the File Browser. 174

#80 Rank Files with the File Browser. . . . 176



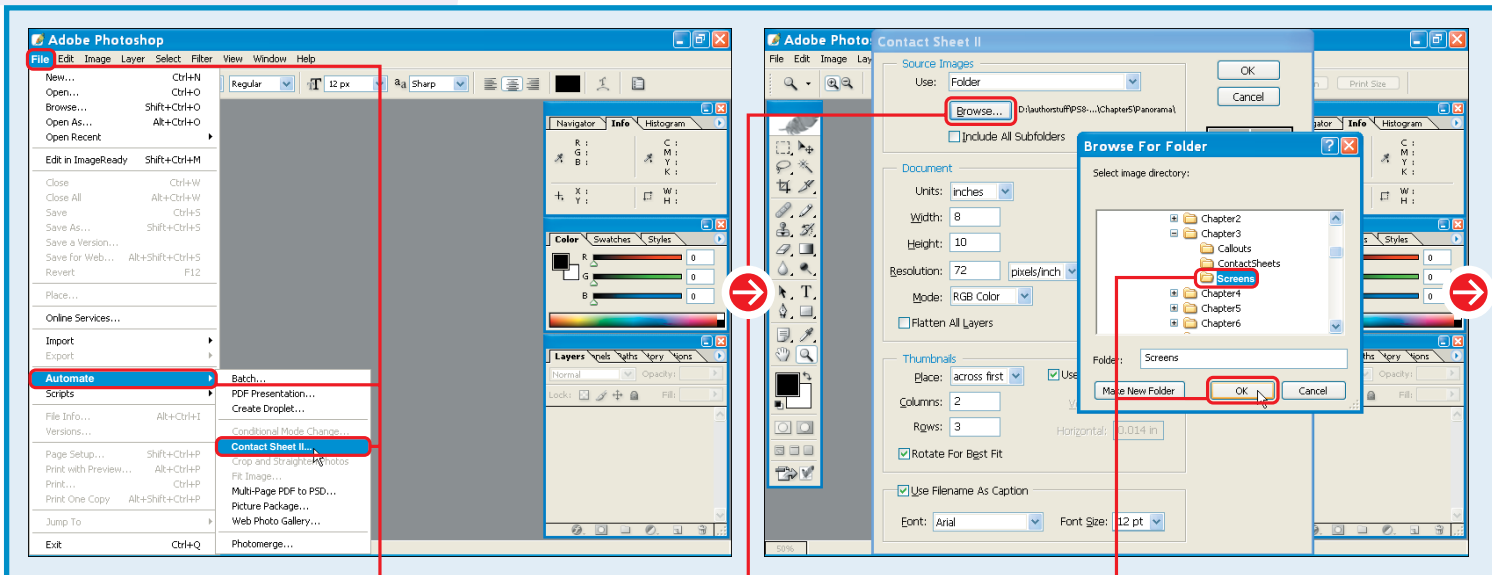


CREATE A CONTACT SHEET

of your images

You can use Photoshop to automatically create a digital version of a photographer's contact sheet. Contact sheets are made up of small versions, or thumbnails, of your images. You can use a contact sheet to preview and keep a record of your image files. This can be useful if you have a large number of digital photos to keep track of, and when you do not want to print them out at full size.

The Contact Sheet II dialog box allows you to specify the number of rows and columns of images you want to display on the contact sheet. It also allows you to add the filename as a caption for each image, which can be useful for matching up each thumbnail with an image file on your computer. You may want to print the contact sheet with a slightly lower resolution, because it is primarily for reference. For more information on previewing how the contact sheet prints on a page, see tasks #72 and #73.



1 Place the images that you want on the contact sheet in a folder.

Note: To work with folders, see your specific operating system's documentation.

- 2 Click File.
- 3 Click Automate.
- 4 Click Contact Sheet II.

- 5 The Contact Sheet II dialog box appears.
- 6 Click Browse.
- 7 The Browse For Folder dialog box appears.

- 8 Select a folder containing images.
- 9 Click OK.

Did You Know? ✨

You can make the thumbnail images of your contact sheet larger or smaller by adjusting the number of rows and columns. Photoshop determines the final size of the thumbnails on the contact sheet based on the number of rows and columns, as well as the paper size.

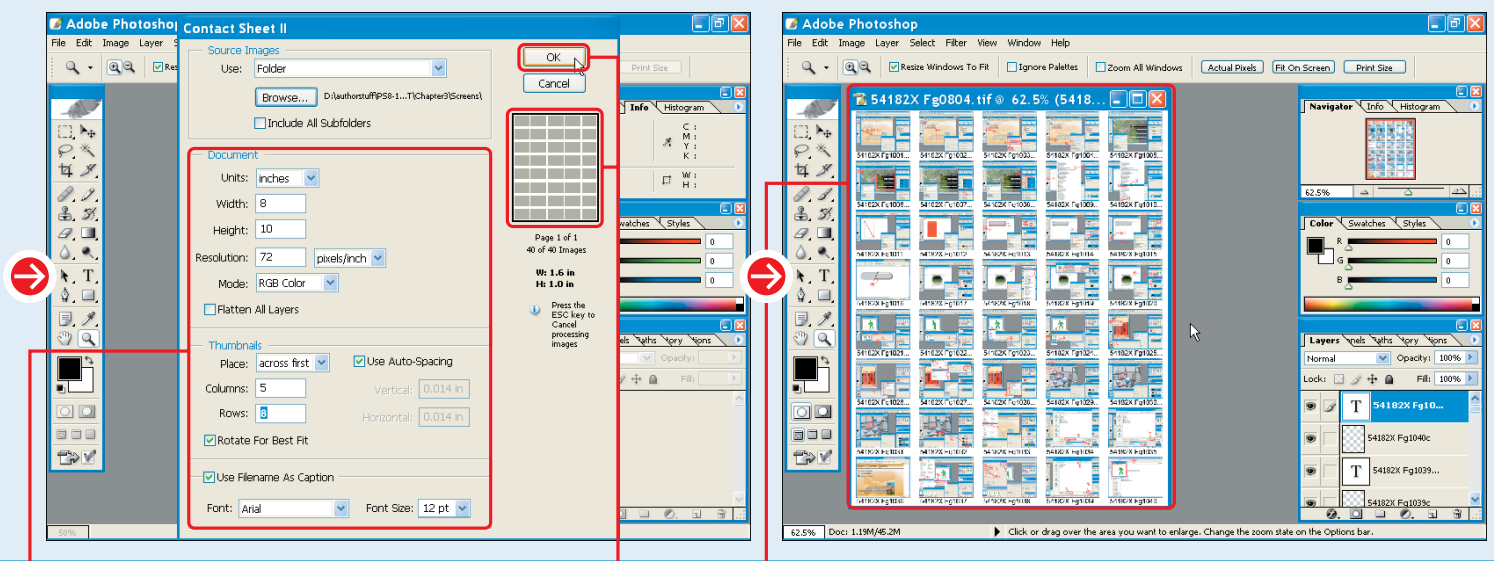
#71

DIFFICULTY LEVEL



Did You Know? ✨

You can edit your contact sheets after you create them. In the Contact Sheet II dialog box, click the Flatten All Layers check box (changes to). When Photoshop creates the layout, each image is on its own layer, and each filename, if used, is still an editable text layer. You can now edit the images or rename the caption.



8 Select the contact sheet properties you want.

○ You can set the contact sheet size and resolution, the order and number of columns and rows, and the caption font and font size.

○ Photoshop displays a preview of the layout.

9 Click OK.

○ Photoshop creates and displays your contact sheets.

○ If there are more images than Photoshop can fit on a single page, then Photoshop adds more contact sheets.



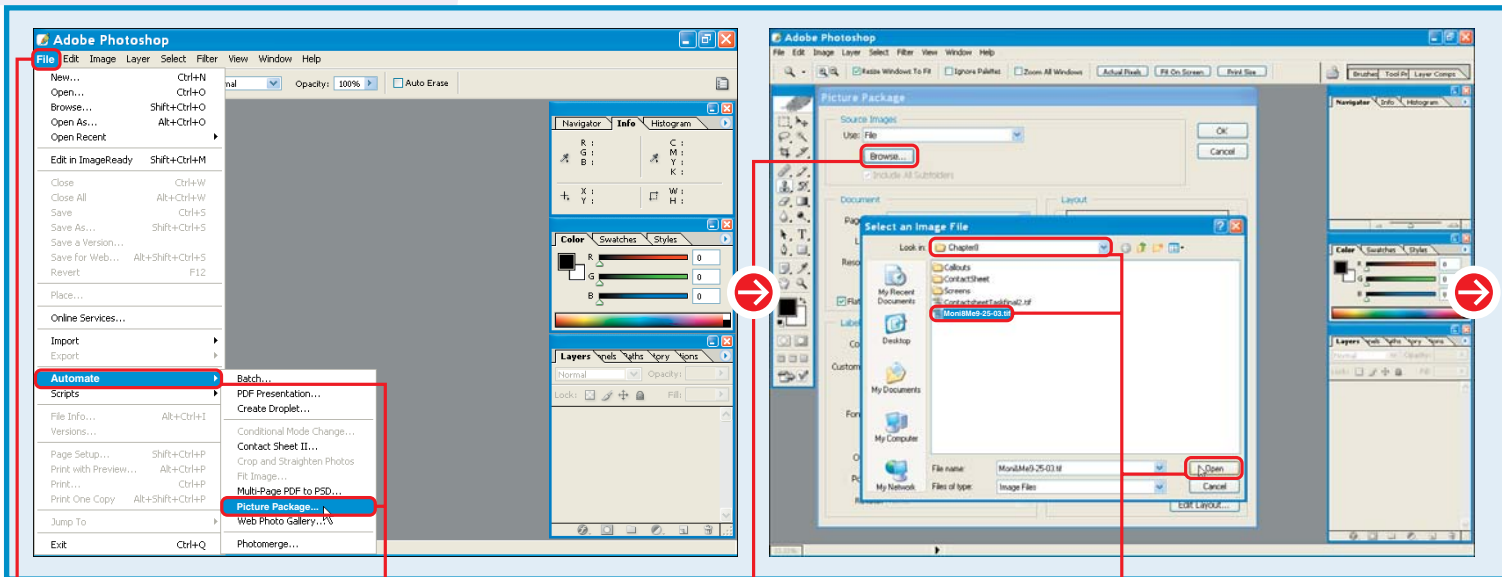
Design a PICTURE PACKAGE

You can use the Picture Package command to automatically create a one-page layout containing a selected image displayed at various sizes. You may find this useful when you want to print out copies of your favorite photo taken with a digital camera or imported by a scanner. Picture sizes range from wallet size to 10 by 13 inches, and paper sizes range from 8 by 10 inches to 11 by 17 inches, giving you many different photograph layouts from which to choose.

The Picture Package dialog box allows you to preview the arrangement of the layout as well as

specify the page size, resolution, and color mode. You can specify what color mode you want to print, such as RGB, CMYK, or Grayscale.

The quality of the resulting printout depends on the quality of the original image, as well as the picture package settings. To help ensure your prints look as sharp as possible, start with a large image and increase the resolution of the picture package setting. You can directly change the resolution of the imported images by entering a value in the Resolution field of the Picture Package dialog box.



1 Click File.

2 Click Automate.

3 Click Picture Package.

4 The Picture Package dialog box appears.

5 Click Browse.

6 The Select an Image File dialog box appears.

7 Click here and select the folder that contains the image file you want.

8 Click the image file.

9 Click Open.

Did You Know? ✨

You can have many different images in each picture package. Click the placeholder for the photo in the Picture Package dialog box, and Photoshop allows you to specify a single image for that placement. You can assign as many different images as there are spaces for the layout. This is very useful for creating sample packages, or printing a series of photos from a particular photo shoot.

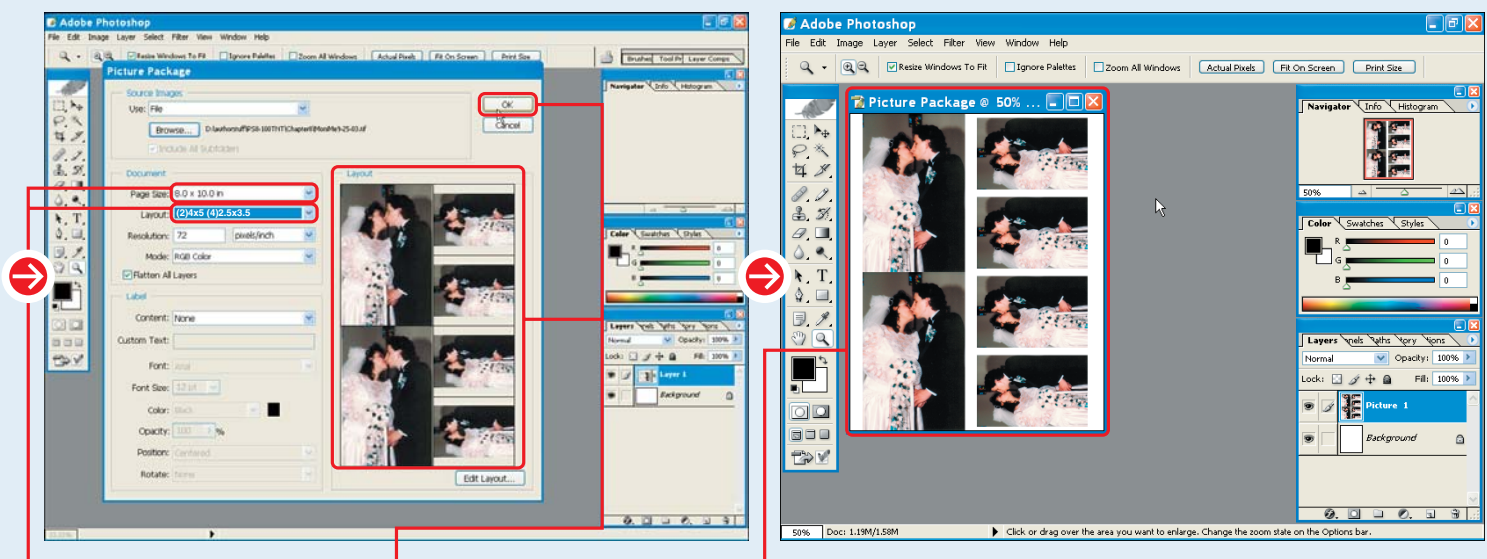
#72

DIFFICULTY LEVEL



Did You Know? ✨

You can create multiple picture packages by specifying a folder in the Use in the Source area of the Picture Package dialog box. Photoshop takes each image in the folder and creates a separate picture package image for it.



8 Click here and select a page size.

9 Click here and select a layout.

10 Photoshop displays the layout.

11 Click OK.

11 Photoshop opens a new image window that displays the picture package image.

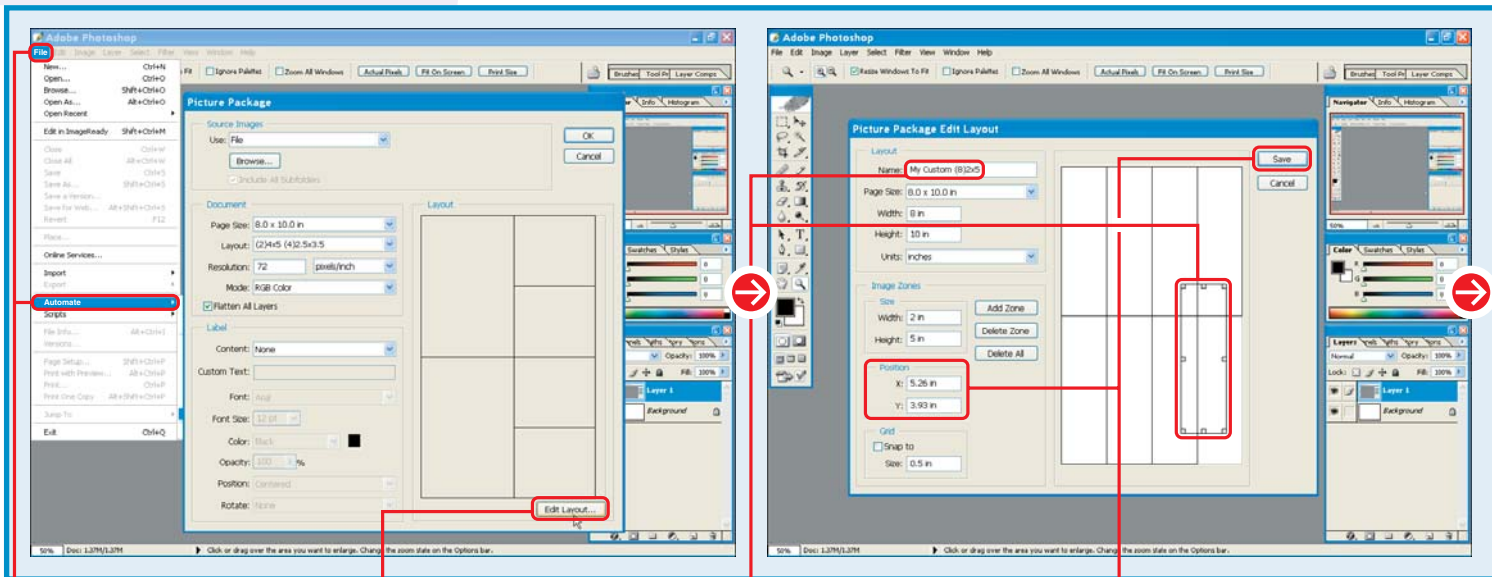
Customize your PICTURE PACKAGE LAYOUT



You can place your images into one of Photoshop's prepared Picture Packages, but you may be limited by the availability of specific sizes or the number of available copies of a size. Photoshop now allows you to edit a picture package and save it for future use.

The Picture Package layout is located under the Automate menu, which is found under the File menu. When you click the Edit Layout button, located at the bottom right of the dialog box, a separate dialog box appears, in which you can make changes to your Picture Package layout.

In the Picture Package Edit Layout dialog box, you can add and remove photo positions, and resize them by entering values or dragging the bounding boxes. Other options allow you to define the page-size and save the layout. After saving the layout, you can access it through the Picture Package dialog box drop-down menus. When you select the same paper size on which you created your custom layout, it appears on that menu. You can find the file in Adobe\Photoshop CS\Presets\Layouts. Simply copy these files to share with other Photoshop users.



- 1 Click File.
- 2 Click Automate.
- 3 Click Picture Package.

- 4 The Picture Package dialog box appears.
- 4 Click Edit Layout.

- 5 The Picture Package Edit Layout dialog box appears.
- 5 Type a name for your layout.
- 6 Click to select an image position.

- 7 Type values for the size and image position.
- 7 You can repeat steps 5 to 7 for any other image positions you want to alter.
- 8 Click Save.

Customize It!

The Picture Package dialog box allows you to add a custom label to each image in the picture package. This can be useful if you want to prominently display a caption or copyright information associated with the image. Click in the Custom Text field to type your caption or label.

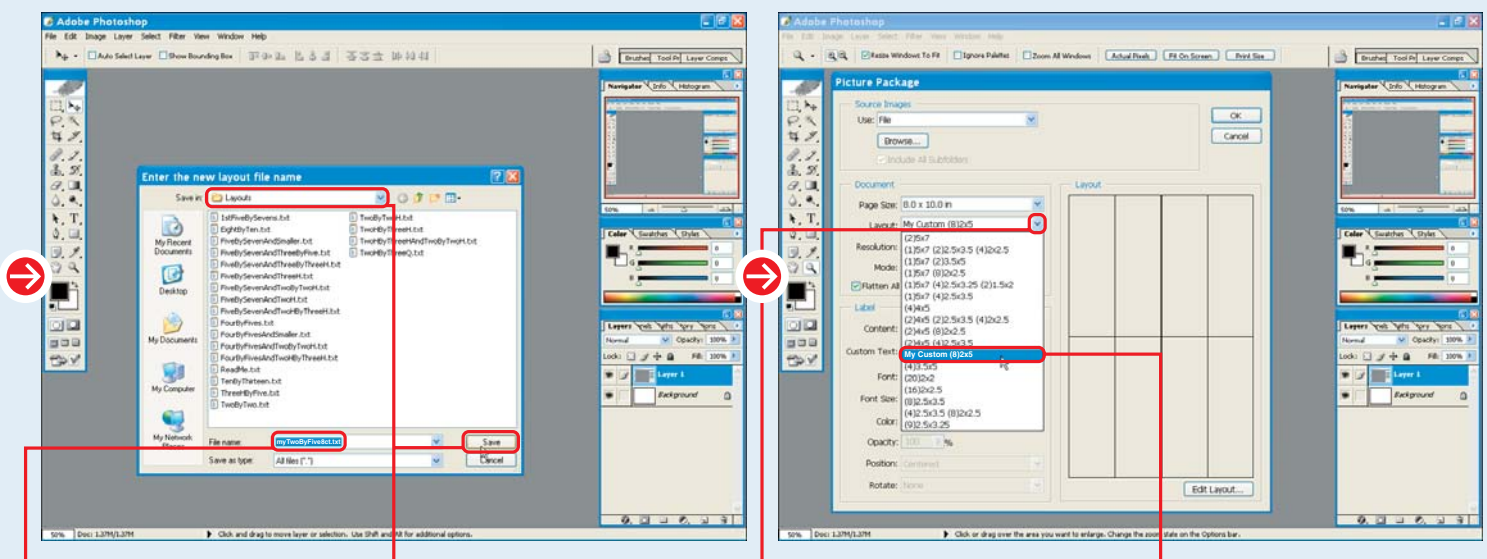
#73

DIFFICULTY LEVEL



Did You Know?

You can also resize the images by clicking and dragging any of the points of the bounding box that surrounds an image position when you select it. As you drag and resize, the actual size appears in the Width and Height text.



○ The Enter the new layout file name dialog box appears.

⑨ Type a name for your layout.

Ⓜ Click here and save your layout in the Adobe\Photoshop CS\Presets\Layouts folder.

Ⓜ Click Save.

○ The Picture Package dialog box appears.

⑫ Click here to display the Layout drop-down menu.

○ Photoshop displays the layout you created.

Create an ONLINE PHOTO GALLERY

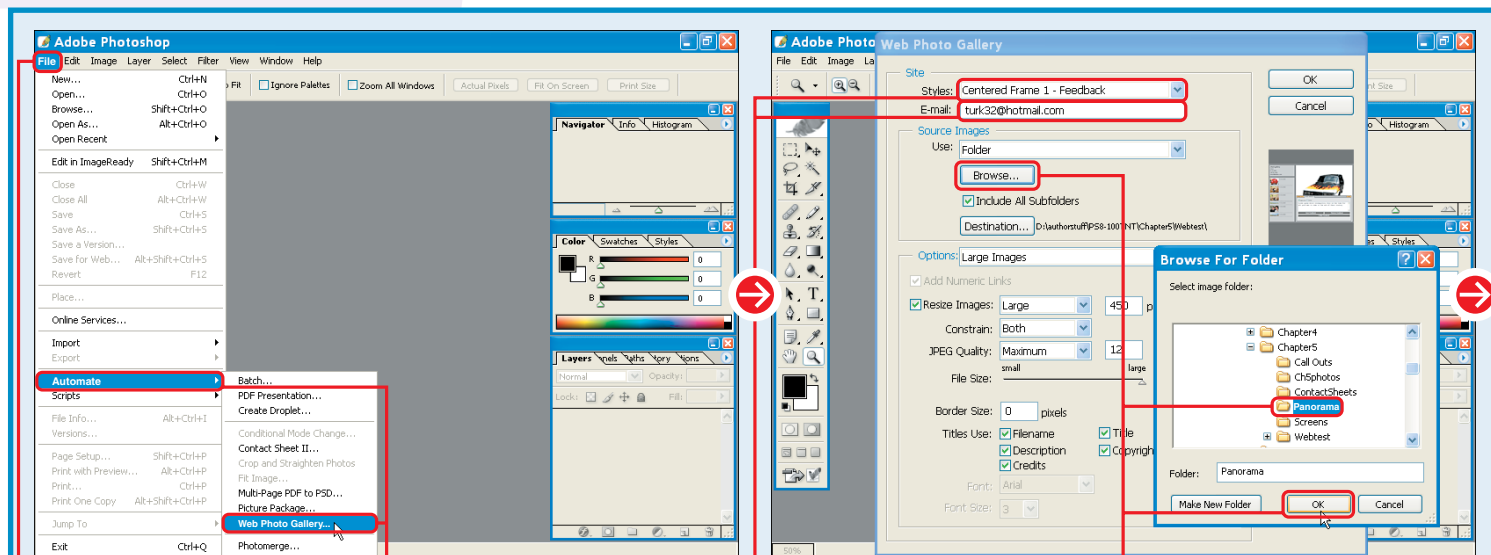


You can design an online photo gallery with Photoshop. You can use your digital images to create a Web site that contains everything necessary to view it as a Web site on the Internet. Photoshop not only optimizes your image files for the site, but it also allows you to select the design for the Web pages that display the images from a gallery of different templates.

Photoshop also generates *thumbnails*, or miniature versions of your images, for display as links in the gallery. When a visitor clicks a link, a full-size image appears in the browser window. Photoshop also adds graphical arrows to use as navigational links.

When you design your gallery, Photoshop offers you several options, including what information — titles, file names, descriptions — is displayed, different layout styles, and the treatment of specific elements within the page.

After you have set the options, Photoshop generates the thumbnails, optimizes the images, and creates everything necessary for the gallery to appear as a Web page. Photoshop saves the finished product in a folder that you can upload to the area designated for your Web page. Photoshop even opens your computer's Internet browser so you can view the new Photo Gallery.



1 Click File.

2 Click Automate.

3 Click Web Photo Gallery.

4 The Web Photo Gallery dialog box appears.

5 Click here and select a photo gallery style.

6 Type an e-mail address as the contact for the gallery.

7 Click Browse.

8 The Browse For Folder dialog box appears.

9 Select the folder containing your images.

10 Click OK.

Customize It! ✨

You can select from a variety of page styles when you click the Styles ▾ in the Site area of the Web Photo Gallery dialog box. You can find preset styles in the Program Files\Adobe\Photoshop CS\Presets\Web Photo Gallery folder. In that folder, you can make a copy of the template, and modify it using a Web publishing or HTML editor. You can then make changes within the pages and save them as templates. See the Photoshop Help files for more information on editing your Web pages.

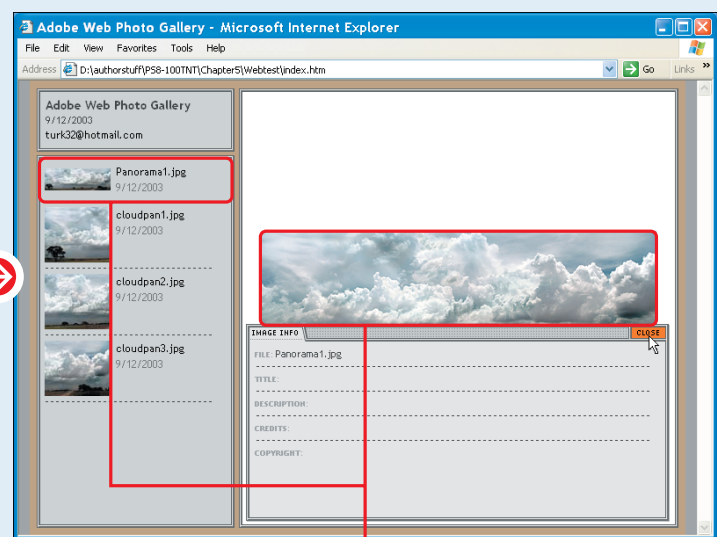
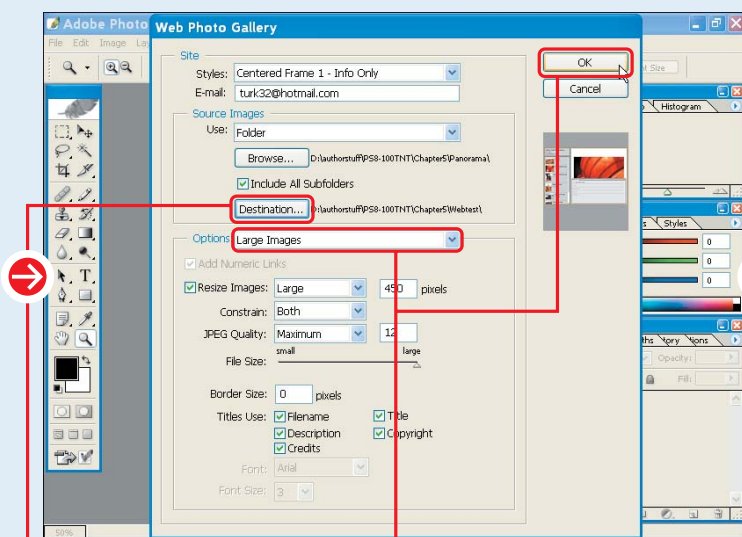
#76

DIFFICULTY LEVEL



Did You Know? ✨

You can select multiple source files directly from the File Browser before you perform steps 1 to 3 below. When you click the Use ▾ in the Source Images area of the Web Photo Gallery dialog box, the Selected files from File Browser option becomes available. Click this option, and Photoshop only uses the images you selected.



9 Click Destination.

10 Repeat steps 7 and 8 to specify the folder in which you want to save your gallery.

11 Click here and select a customizing option.

12 Click OK.

Photoshop opens each image in the specified folder, creates versions for the photo gallery, and generates the necessary HTML.

After Photoshop generates the Web pages, it displays the gallery in your default browser.

You can click a thumbnail to see a larger version of the image.